



VF680

Multi-function Face Identification Terminal

VF680 is a face identification time & attendance and access control terminal, which can connect with third party electric lock, door sensor, and exit button etc. With the latest face identification algorithm and streamlined technology, it can hold 800 face templates without dividing into groups. Communicating via Wi-Fi(Optional), TCP/IP, and USB (host and client), it ensures a smooth connection and data transfer. Amazing verification speed and intuitive operation process make it popular. Elaborately designed and finely processed, it matches your slap-up office perfectly.

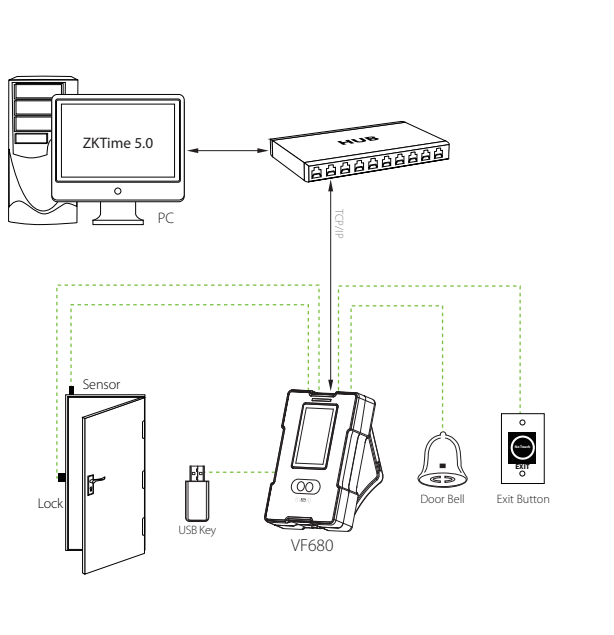
Feature

- Elegant ergonomic design; Easy installation.
- Wi-Fi(Optional), TCP/IP, and USB (host and client) communication.
- Professional ZKTeco face identification algorithm.
- 800 face capacity and 10,000 ID Card Capacity.
- Optional Mifare card module.
- Infra-red optical system enables user-identification in a wide range of light environments.

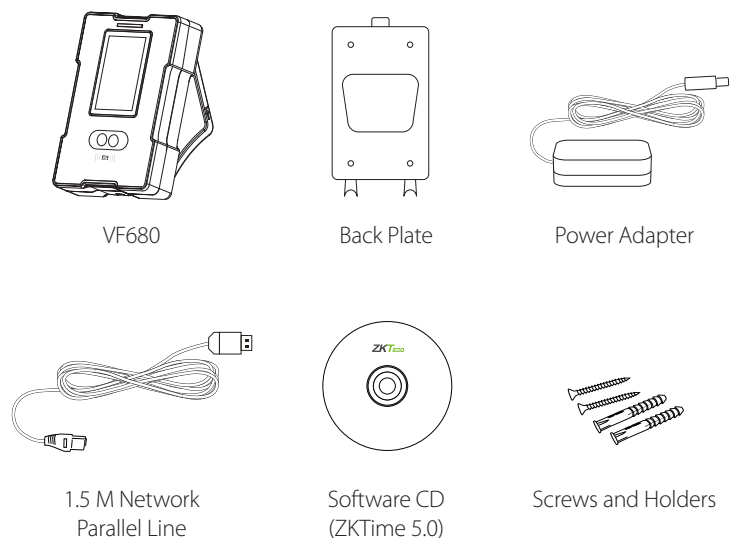
Specifications

Display	3-inch Touch Screen
Face Capacity	800(Standard)/1200(Optional)(1:N)
ID Card Capacity	10,000
Logs Capacity	100,000
Communication	TCP/IP , USB (host and client)
Standard Functions	ID Card, Automatic Status Switch, Self-Service Query, Work Code, T9 Input, 9 Digit User ID, DST, Scheduled-bell and Short Message, 3rd Party Electric Lock, Door Sensor, and Exit Button, Alarm
Optional Function	Mifare Card, Wi-Fi
Power Supply	12V/1.5A
Verification Speed	≤1S
Operating Temperature	0-45 °C
Operating Humidity	20%-80%
Dimensions	104.7 × 160 × 36 mm (L × H × D)

Configuration



What's in the Box



ZKTeco Inc.
E-mail: sales@zkteco.com
www.zkteco.com

© Copyright 2014. ZKTeco Inc. ZKTeco Logo is a registered trademark of ZKTeco or a related company. All other product and company names mentioned are used for identification purposes only and may be the trademarks of their respective owners. All specifications are subject to change without notice. All rights reserved.

